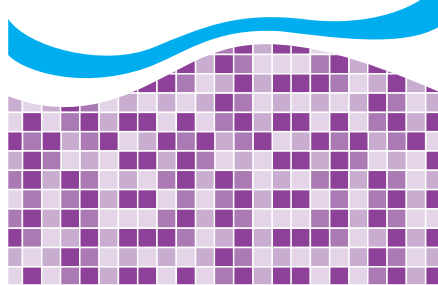


# POOL SEASON<sup>®</sup>



## LIQUID FLOC PLUS

- Clears Cloudy Water by Dropping Particles to the Pool Floor for Vacuum Removal
- Improves Filter Efficiency

Treats up to  
40,000 Gallons

KEEP OUT OF REACH OF CHILDREN  
**DANGER**

Corrosive to eyes and skin.  
May cause respiratory irritation.

Read all Precautionary Statements and  
First Aid on back panel before use.

**NET CONTENTS 1 QUART (946 ml)**

**APPROVED**

By Annette Niemiec at 1:42 pm, Apr 12, 2022

**APPROVED**

By RICK HANLON at 12:35 pm, Apr 07, 2022

**Liquid Floc Plus** thoroughly settles un-filterable, suspended debris (carbonates, silica, dead algae and spore-like materials) to the pool bottom so debris may be easily vacuumed to waste. Use with normal pH and Free Chlorine levels. **Liquid Floc Plus** contains no corrosive alum or chloramine forming ammonia, will not affect pH, and is appropriate for use with all pools & filters.

#### INSTRUCTIONS FOR USE

##### CLOUDY WATER

1. SHAKE WELL BEFORE USING.
2. Adjust pH to within the normal range of 7.2-7.6.
3. Use at a rate of 8 fl. oz. per 10,000 gallons and apply evenly over surface of pool.
4. **NOTE: NEVER MIX THIS PRODUCT WITH ANY OTHER CHEMICAL BEFORE ADDING TO THE POOL.**
5. Let pump circulate water for 2 hours to distribute **Liquid Floc Plus** throughout the pool.
6. Shut off pump. Let **Liquid Floc Plus** settle debris to bottom while pool remains undisturbed for 12 to 48 hours (usually overnight). Note: The greater the debris in the water, the faster **Liquid Floc Plus** works. To speed settling time, you may double or triple **Liquid Floc Plus** dosage.
7. **VACUUM TO WASTE** all settled debris with filter in **WASTE** or **DRAIN** mode. Note: Settling may continue for several days if new debris is introduced by wind or rain. If so, vacuum to waste again.
8. Backwash and clean filter and resume normal filter cycle.
9. Check pH and readjust if needed to 7.2-7.6.

##### WATER WITH ALGAE OR SPORE-LIKE MATERIAL

**Liquid Floc Plus** will not kill algae or spores, but assists in their removal after being treated with chlorine.

1. Double or triple shock pool with Shock Treatment in the evening.
2. Let filter run 2 hours and turn off.
3. The following morning, follow "INSTRUCTIONS FOR USE: CLOUDY WATER".

##### FIRST AID:

**IF IN EYES:** Hold eye open and rinse slowly and gently with water for 15 – 20 minutes. Call a poison control center or doctor for treatment advice.

**IF ON SKIN OR CLOTHING:** Take off contaminated clothing. Rinse skin immediately with plenty of water for 15 – 20 minutes. Call a poison control center or doctor for treatment advice.

**IF INHALED:** Move person to fresh air. If person is not breathing, call 911 or an ambulance, then give artificial respiration, preferably by mouth-to-mouth if possible. Call a poison control center or doctor for treatment advice.

**IF SWALLOWED:** Call a poison control center or doctor immediately for treatment advice. Have person sip a glass of water if able to swallow. Do not induce vomiting unless told to do so by the poison control center or doctor. Do not give anything by mouth to an unconscious person.

##### IN CASE OF EMERGENCY CALL: 1-800-654-6911

Have the product container or label with you when calling a poison control center or doctor or going for treatment.

**PRECAUTIONARY STATEMENTS: DANGER.** Contains aluminum chloride. Corrosive to eyes and skin. May cause respiratory irritation. Do not get into eyes, on skin or on clothing. Do not swallow. Wear safety glasses or goggles and chemical-resistant gloves when handling this product. Wash hands thoroughly after handling. Remove and wash contaminated clothing before reuse. Do not mix with other chemicals.

**STORAGE & DISPOSAL:** Keep this product in its original, tightly closed container when not in use. Store in a cool location, separated from chlorinating materials or ammoniating products. Use entire contents, then triple rinse and offer for recycling, or dispose in accordance with state and local regulations. Do not reuse empty container.

GH-50-9110

Manufactured for:  
Alliance Trading, Inc.  
109 Northpark Blvd, 4<sup>th</sup> Floor  
Covington, LA 70433

REV040722



32 oz.

30 oz.

28 oz.

26 oz.

24 oz.

22 oz.

20 oz.

18 oz.

16 oz.

14 oz.

12 oz.

10 oz.

8 oz.

6 oz.

4 oz.

2 oz.